




2020 DEPARTURES TBA

PRICE TBA

 Asahikawa | **TYPE** Backcountry | **DURATION** 7 nights, 8 days | **SKILL LEVEL** Level 4 | **FITNESS LEVEL** Level 3

*Group participants to 6 people*

## Guided backcountry skiing to some of the best powder in the world, in Central Hokkaido

### WHY HOKKAIDO POWDER GUIDES?

**Local Knowledge** We are based in Hokkaido and have been in operation for 15 years. Having an intimate knowledge of the mountains and locales enables us to craft amazing ski journeys.

**Safety** Our daily operation involves monitoring the weather and snowpack, and this dictates all our decision making. A safety plan is in place for each of our guiding areas. We also maintain good communication with the local emergency authorities which is essential for backcountry trips in Japan.

**Exclusivity** We seek exclusivity with the terrain that we ski, and our snowmobile accessed areas guarantee fresh tracks.

**Preparation** We have excellent pre-trip support and each destination includes an information package specific to the area.

**Travel Agency** We are also a registered travel agency and book all of your accommodation and transfer requirements.



**OUR GUIDES** bring together a collective experience gained from years working for guiding operations in Japan and abroad. They are certified through their individual country's guiding associations as ski guides, or full mountain guides IFMGA/UIAGM.

# ITINERARY Daisetsuzan BC Week

The following is a 'general' outline for the trip. Hokkaido Powder Guides reserves the right to make alterations and substitutions to the itinerary as weather or terrain conditions dictate or as necessary to improve the trip quality or to accommodate the comfort, convenience, and well-being of our guests.



## DAY 1 Furano Transfer

Transfer to the township of Furano, also known as the 'Navel of Hokkaido.' Check in and meet your guide who will fill you in on the snow conditions and weather forecast for the week ahead.

## DAY 2 Snowmobile Accessed Backcountry

The first day we will ski in the Yubari Range. You will be transported by snowmobile across a four kilometer approach before the skinning ascent. This is a great warm up day where we will be skiing open north facing terrain. Enjoy a choice of restaurants in the Furano township in the evening.

## DAY 3 National Park Transfer

We are back in the Yubari Range with a snowmobile approach in a different valley. This is an economical circuit that maximizes the skiing. Afterwards, transfer to the Daisetsuzan National Park. Stay in a hot spring hotel at the heart of the backcountry terrain.

## DAY 4 Mt Furano

Ascend through a nine hundred year old spruce forest to the upper elevations of the mountain, giving way to silver birch and stunning views. From here there are three ridge-lines with superb skiing on either side. Our typical circuit is usually a loop that finishes on the steepest tree skiing in the area. Retire to the outdoor hot spring at the end of the day.

## DAY 5 The Three Step Mountain

Traverse to the 'Three Step' mountain. The circuit has magnificent views of the live volcano which is the next mountain along the range. On a clear day, the volcano's billowing smoke rises high into the sky. The last descent will take you to a natural outdoor spring in the middle of the forest. Retire back to the hotel for a traditional dinner.

## DAY 6 The Live Volcano

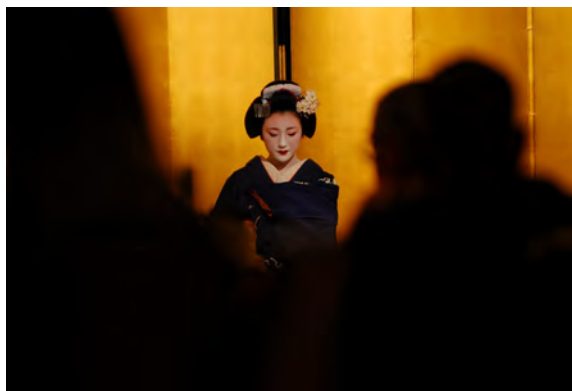
Ski the live volcano of Mt Tokachi. Peer in to the crater before skiing one of the gully runs feeding from the summit. We will typically ascend another aspect on the cone shape mountain for another run, before finishing in an outdoor hot spring with views of our lines.

## DAY 7 Snowmobile Accessed Backcountry

We transfer back in to the valley where we will be skiing in the Yubari Range, accessed via snowmobile. The last day you will ski the highest mountain in our backcountry terrain. You will ski runs like 'Time Warp' which is fantastic tree skiing. We celebrate the last night at a local traditional restaurant.

## DAY 8 Airport Transfer

Farewell and airport transfer



## TRIP LEVEL

This trip ski level is rated as a LEVEL 4. You should be competent skiing in the trees in powder snow. The fitness is rated as LEVEL 3. You should be comfortable spending days out in the backcountry and ascending up to 4 hours.

# DETAILS



## SKIS AND EQUIPMENT

Skis which have a mid ski width of 100-115 mm with touring bindings and skins are essential for this trip. Please contact us if you would like to rent skis. Avalanche equipment such as beacon, probe and shovel are also essential.

## MOUNTAINS AND SNOW

The Daisetsuzan Mountains average 2,000 meter elevations. The tree-line is around 1,400 meters which give way to the alpine. The Yubari Range mountains are below 2,000 meters and are predominantly tree skiing.

Low humidity levels produce some of the lightest consistency powder in the world.

## LODGING AND FOOD

You will be staying in a comfortable 3 star hotel in Furano. The township has a good selection of restaurants. In the national park you will stay in a traditional style hot spring hotel. Rooms are tatami flooring and have futon bedding. Bathing is in the segregated communal hot spring. Each room has a WC. All meals are included in the national park.

## TRAVEL INSURANCE



**World  
Nomads**

Medical Insurance is mandatory on all trips and Travel Insurance is strongly

recommended. Please visit our recommended insurance provider World Nomads to learn more.

## WHAT'S INCLUDED?

- 6 guided days
- 7 nights accommodation
- 7 breakfasts, 3 lunches and 3 dinners
- Scheduled Airport Bus transfers & all transportation on guided days
- Detailed pre-departure information & trip extension assistance
- Snowmobile fees 3 days

## WHAT'S NOT INCLUDED?

- Lunches and dinners in Furano
- Airfares
- Personal travel and medical insurance
- Optional tipping to guides
- Ski equipment rental
- Drinks



## WHY HOKKAIDO POWDER GUIDES

*We are a Hokkaido based guiding company in operation for fifteen years. Having an intimate knowledge of the mountains and locales enables us to craft amazing ski journeys. Hokkaido is not just about the skiing, but also the cultural and culinary experience, and it is this combination that truly makes for an unforgettable ski trip.*

# DETAILS *continued*



## BOOKING PROCESS

Call us at +81-167-225655 or email at [info@hokkaidopowderguides.com](mailto:info@hokkaidopowderguides.com) to confirm there's space on this trip. If Skype is preferred, please send us an email to arrange a time.

Make sure you have read and understand our 'Terms and Conditions' and also our 'Waiver' which we will send to you.

To confirm your spot please complete our secure 'Individual Form' on our website.

## PAYMENT

Once you've completed our on-line registration form and we've confirmed that we have the number of participants for the trip, we will send you the booking policy. Please review our 'Terms & Conditions' for the full details on payment, cancellation and refund policies. The amount payable will need to be made in Japanese yen.

If you are paying with credit card there is a 5% processing fee. Another option is to pay via a bank remittance. Please contact us anytime to discuss your options.

## SINGLE SUPPLEMENT

The single supplement is an additional fee for solo travelers who wish to have their own rooms during the trip.

## QUESTIONS?

Feel free to call us at +81-167-225655 or email [info@hokkaidopowderguides.com](mailto:info@hokkaidopowderguides.com) if you have any questions or need any additional information.

## CONTACT US

Hokkaido Powder Guides 2-14 Kitanomine, Furano-Shi, Hokkaido, Japan 076-0034