


Hokkaido's Three Volcanoes



2020 DEPARTURES TBA

PRICE TBA

 Chitose | **TYPE** Backcountry | **DURATION** 10 nights, 11 days | **SKILL LEVEL** Level 4 | **FITNESS LEVEL** Level 4

Group participants to 6 people

A backcountry ski adventure to ski three of Hokkaido's iconic volcanoes

WHY HOKKAIDO POWDER GUIDES?

Local Knowledge We are based in Hokkaido and have been in operation for 15 years. Having an intimate knowledge of the mountains and locales enables us to craft amazing ski journeys.

Safety Our daily operation involves monitoring the weather and snowpack, and this dictates all our decision making. A safety plan is in place for each of our guiding areas. We also maintain good communication with the local emergency authorities which is essential for backcountry trips in Japan.

Exclusivity We seek exclusivity with the terrain that we ski, and our snowmobile accessed areas guarantee fresh tracks.

Preparation We have excellent pre-trip support and each destination includes an information package specific to the area.

Travel Agency We are also a registered travel agency and book all of your accommodation and transfer requirements.



OUR GUIDES bring together a collective experience gained from years working for guiding operations in Japan and abroad. They are certified through their individual country's guiding associations as ski guides, or full mountain guides IFMGA/UIAGM.

ITINERARY Hokkaido's Three Volcanoes



The following is a 'general' outline for the trip. Hokkaido Powder Guides reserves the right to make alterations and substitutions to the itinerary as weather or terrain conditions dictate or as necessary to improve the trip quality or to accommodate the comfort, convenience, and well-being of our guests.

DAY 1 Niseko Transfer

From Sapporo's Chitose Airport you will travel to Niseko, the high snowfall region of Hokkaido. Arrive to a town with massive snowbanks by the side of the road and most likely, falling snow.

DAY 2 Lift Accessed Skiing

Shake off any jet lag with a lift accessed backcountry day to one of the four accessible resorts. These are all located within a forty minute radius and all receive different snow amounts due to the mini micro-climates.

DAY 3 'The Fuji of the North'

Ever skied in to a volcanic crater? Mt Yotei is referred to as the 'Mt Fuji of the North.' The site of the volcano dominates the surrounding area, rising to 1,800 meters. Our plan is to ski in to the crater and then down the other side, for a 1,400 meter vertical descent.

DAY 4 Snowmobile Accessed Backcountry

We travel to a secluded backcountry destination accessed by snowmobile. The ten minute tow in puts us at the base of the skiing. The area has deep powder skiing and provides good protection from Niseko's frequent storms and predominant wind. Transfer to a traditional ryokan hotel by the coast.

DAY 5 The Sea of Japan

Snowmobile tow in to start the day. We are skiing on the northern side of the range which has fantastic views over the Sea of Japan. This is an excellent tree skiing area and provides various options depending on the weather. Finish at a renowned sushi restaurant after skiing.

DAY 6 Central Hokkaido Transfer

Travel day to Central Hokkaido. You will treat your palate with a stop at a whiskey distillery and then on to a port town for lunch in an old wharf warehouse. The hot spring hotel for the evening is ideally located for the next day's skiing.

DAY 7 Snowmobile Accessed Backcountry

You will ski beautiful open north facing terrain which we access by snowmobile. Transfer to the southern end of the Daisetsuzan National Park after skiing. These are Hokkaido's highest mountains and volcanoes. For the next three nights you will stay in a hot springs hotel in the heart of the backcountry terrain.

Day 8 The Primeval Forest

The route today will take you through a nine hundred year old spruce forest. From here there are three ridge-lines with superb skiing on either side. Retire to the outdoor hot spring at the end of the day.

DAY 9 The Live Volcano

Ski the live volcano of Mt Tokachi. Peer in to the crater before skiing one of the gully runs feeding from the summit. The day will finish with a soak in a forest hot spring which is reputed to have healing qualities.

DAY 10 Asahidake

This is the largest mountain in Hokkaido. On clear days you can see plumes of white smoke billowing from its many vents. If we have good weather, we will ski from the roof of Hokkaido. In case of bad visibility, we will ride the ropeway from treeline through the old growth spruce forest.

DAY 11 Return Transfer

Return transfer after breakfast.



TRIP LEVEL

This trip ski level is rated as a LEVEL 4. You should be competent skiing in the trees in powder snow. The fitness is rated as LEVEL 3. You should be comfortable spending days out in the backcountry and ascending up to 4 hours.

DETAILS



SKIS AND EQUIPMENT

Skis which have a mid ski width of 100-115 mm with touring bindings and skins are essential for this trip. Please contact us if you would like to rent skis. Avalanche equipment such as beacon, probe and shovel are also essential.

MOUNTAINS AND SNOW

The volcano of Mt Yotei is 1,800 meters and has 1,400 meters of descent skiing from the summit. Elevations of mountains in Daisetsuzan National Park are 2,000 meters with around 800m vertical skiing in alpine and tree terrain. Hokkaido is renowned for huge accumulations of snow, fed by weather systems that originate from Siberia which pick up moisture from the Sea of Japan.

LODGING AND FOOD

You will be staying in a combination of hotels and traditional hot spring ryokan accommodation. These have indoor and outdoor hot springs. You will be accommodated in tatami rooms with futon bedding. The food is traditional cuisine. On three nights you will eat out.

TRAVEL INSURANCE



Medical Insurance is mandatory on all trips and Travel Insurance is strongly

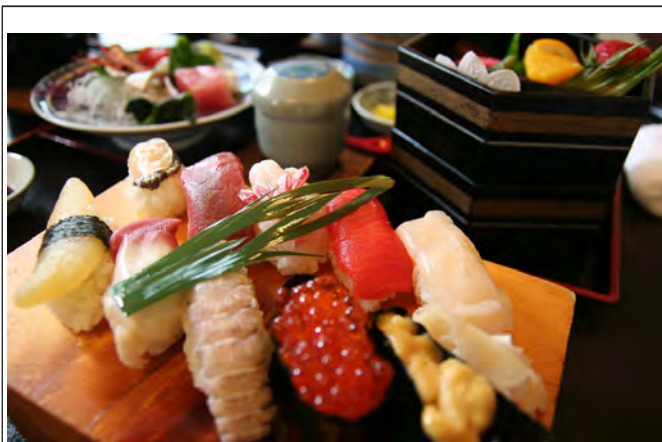
recommended. Please visit our recommended insurance provider World Nomads to learn more.

WHAT'S INCLUDED?

- 8 guided days
- 10 nights accommodation
- 10 breakfasts, 3 lunches and 7 dinners
- Scheduled Airport Bus transfers & all transportation on guided days
- Detailed pre-departure information & trip extension assistance
- Snowmobile fees 3 days

WHAT'S NOT INCLUDED?

- 6 Lunches and 3 dinners
- Airfares
- Personal travel and medical insurance
- Optional tipping to guides
- Ski equipment rental
- Drinks



WHY HOKKAIDO POWDER GUIDES

We are a Hokkaido based guiding company in operation for fifteen years. Having an intimate knowledge of the mountains and locales enables us to craft amazing ski journeys. Hokkaido is not just about the skiing, but also the cultural and culinary experience, and it is this combination that truly makes for an unforgettable ski trip.

DETAILS *continued*



© Takahiro Nakanishi

BOOKING PROCESS

Call us at +81-167-225655 or email at info@hokkaidopowderguides.com to confirm there's space on this trip. If Skype is preferred, please send us an email to arrange a time.

Make sure you have read and understand our 'Terms and Conditions' and also our 'Waiver' which we will send to you.

To confirm your spot please complete our secure 'Individual Form' on our website.

PAYMENT

Once you've completed our on-line registration form and we've confirmed that we have the number of participants for the trip, we will send you the booking policy. Please review our 'Terms & Conditions' for the full details on payment, cancellation and refund policies. The amount payable will need to be made in Japanese yen.

If you are paying with credit card there is a 5% processing fee. Another option is to pay via a bank remittance. Please contact us anytime to discuss your options.

SINGLE SUPPLEMENT

The single supplement is an additional fee for solo travelers who wish to have their own rooms during the trip.

QUESTIONS?

Feel free to call us at +81-167-225655 or email info@hokkaidopowderguides.com if you have any questions or need any additional information.

CONTACT US

Hokkaido Powder Guides 2-14 Kitanomine, Furano-Shi, Hokkaido, Japan 076-0034